

# ANODE

## IDENTIFICATION CHART

darglow

MARINE ENGINEERS



### How to identify & specify your anode:

Darglow manufactures and supplies an increasing number of anodes to suit various propeller ranges.

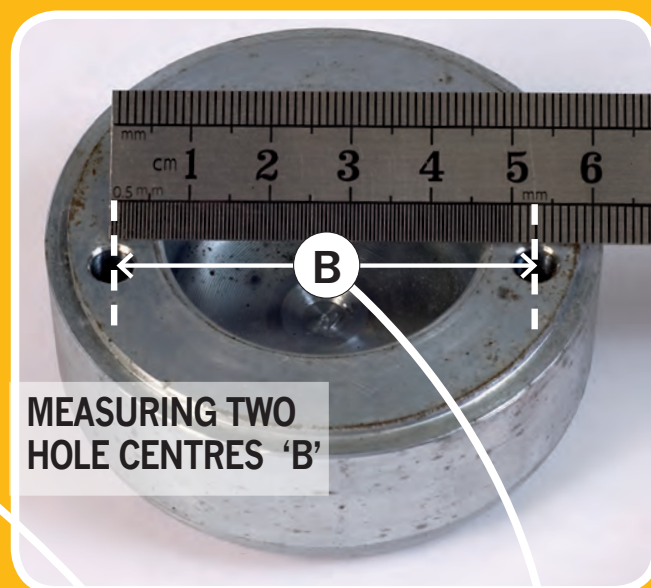
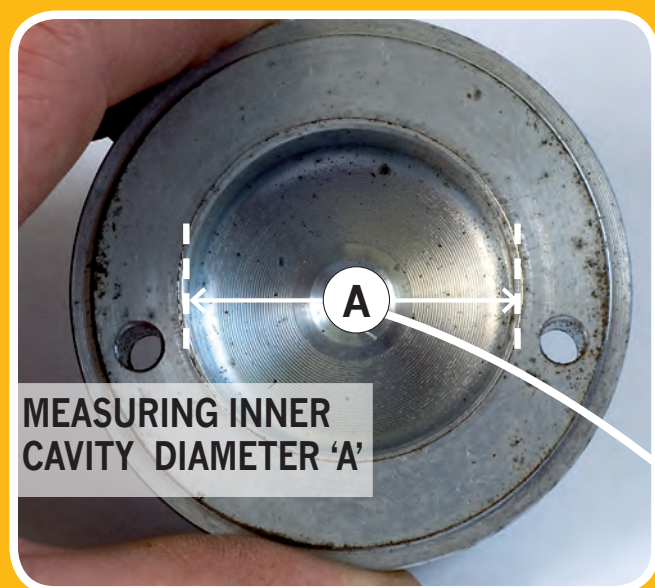
Please follow the simple points opposite in order to identify the correct anode to suit your propeller:

1. Look through this guide to locate the pages containing your 'brand' or make of anode.

2. Measure points 'A' and 'B' to check that the dimensions correspond with those in the table above it's picture - and that they match those of your anode and propeller. NB: Exceptions will be indicated.

3. When contacting Darglow, please specify the 'Type' and 'New code' as detailed in the table, See illustrated example below.

VERSION #7 10-16



Quote references from this section when ordering:

Example:

Brand FeatherStream

New code: FSL01

(Previous name: FSL Disc)

Inner cavity dia 'A' = 41mm

Hole centres 'B' = 52mm

**FEATHERSTREAM™**  
PROPELLERS

**flexofold**  
sailboat propellers

**MAX-PROP**  
AUTOMATIC FEATHERING PROPELLERS

**NOTE:** Anodes are not shown at actual size or in scale to each other. Guide measurements are approx', and should be taken where shown.

darglow  
MARINE ENGINEERS

Darglow Engineering Limited. Unit 6, Justin Business Park, Sandford Lane, Wareham, Dorset BH20 4DY

Tel: +44 (0)1929 556512

www.darglow.co.uk

Email: mail@darglow.co.uk

Fax: 01929 551 956

# ANODE

## IDENTIFICATION CHART

**darglow**

MARINE ENGINEERS

Note: Please measure points 'A' and 'B' whilst referring to this chart in order to identify your anode and then quote the 'Brand' and 'New code' ref.

Brand: FeatherStream

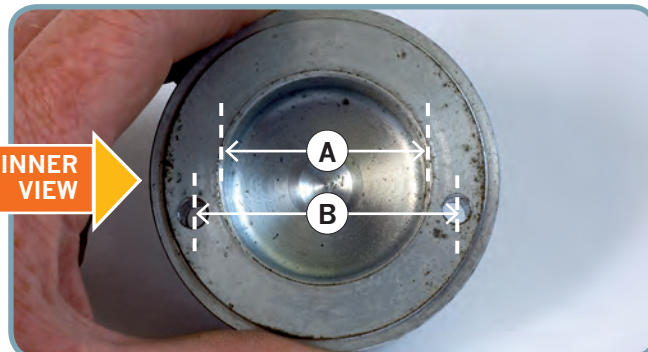
New code: FSL01 (Previous name: FSL Disc)

Inner cavity dia 'A' = 41mm

Hole centres 'B' = 52mm



OUTER  
VIEW



INNER  
VIEW

Brand: FeatherStream

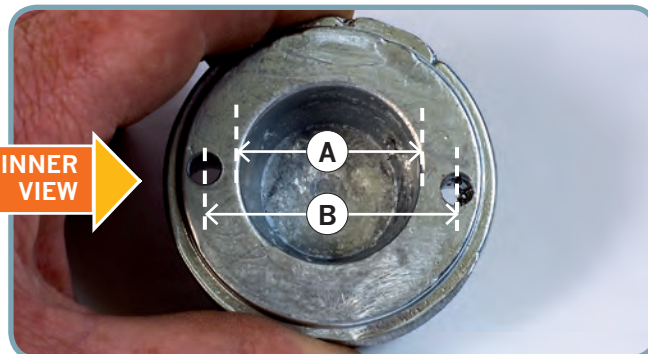
New code: FSS02 (Previous name: FSS Disc)

Inner cavity dia 'A' = 32mm

Hole centres 'B' = 45mm



OUTER  
VIEW



INNER  
VIEW

Brand: FeatherStream

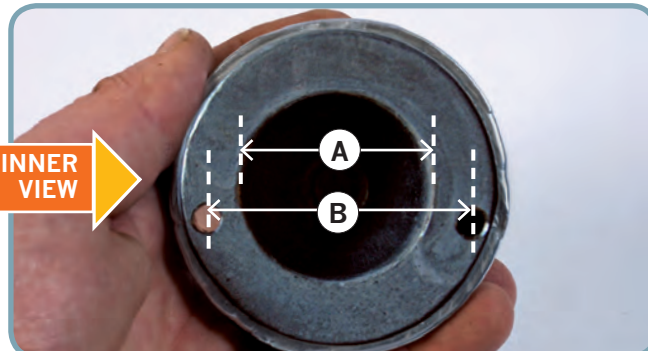
New code: FSL03 (Previous name: FSL)

Inner cavity dia 'A' = 38mm

Hole centres 'B' = 53mm



OUTER  
VIEW



INNER  
VIEW

Brand: FeatherStream

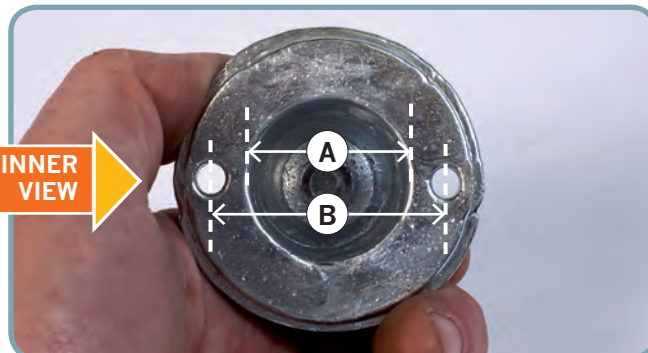
New code: FSS04 (Previous name: FSS)

Inner cavity dia 'A' = 30mm

Hole centres 'B' = 45mm



OUTER  
VIEW



INNER  
VIEW

SHEET #2

**FEATHERSTREAM™**  
PROPELLERS

**flexofold**  
sailboat propellers

**MAX-PROP**  
AUTOMATIC FEATHERING PROPELLERS

NOTE: Anodes are not shown at actual size or in scale to each other. Guide measurements are approx', and should be taken where shown.

**darglow**  
MARINE ENGINEERS

Darglow Engineering Limited. Unit 6, Justin Business Park, Sandford Lane, Wareham, Dorset BH20 4DY

Tel: +44 (0)1929 556512 www.darglow.co.uk Email: mail@darglow.co.uk Fax: 01929 551 956



# ANODE

## IDENTIFICATION CHART

**darglow**

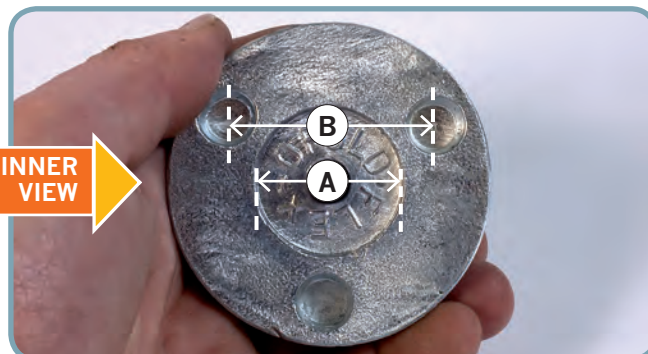
MARINE ENGINEERS

Note: Please measure points 'A' and 'B' whilst referring to this chart in order to identify your anode and then quote the 'Brand' and 'New code' ref.

Brand: Flex-O-Fold

New code: FF01 (Previous name: 3 Blade)

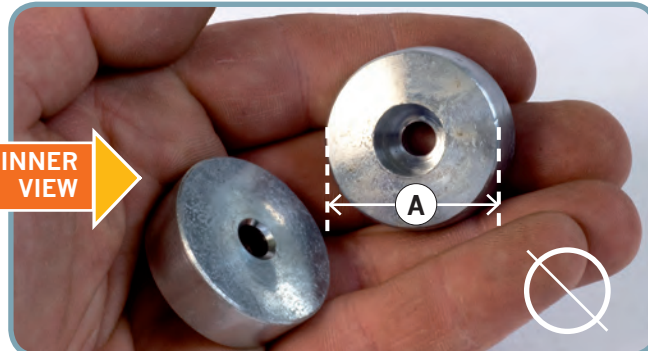
Inner cavity dia 'A' = 31mm Hole centres 'B' = 45mm



Brand: Flex-O-Fold

New code: FF02 (Previous name: 2 Blade Set)

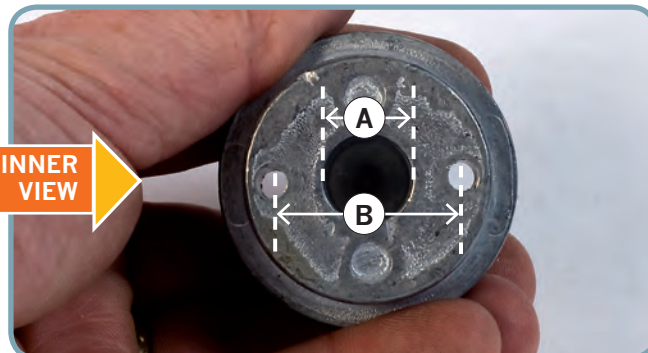
Outer dia 'A' = 31mm (no 'B' dimension required)



Brand: Max-Prop

New code: MP01 (Previous name: 2 Blade)

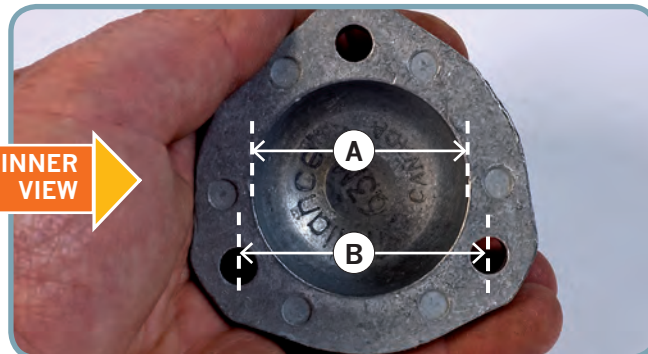
Inner cavity dia 'A' = 13mm Hole centres 'B' = 28mm



Brand: Max-Prop

New code: MP02 (Previous name: A63 Old Style)

Inner cavity dia 'A' = 39mm Hole centres 'B' = 47mm



SHEET #3

**FEATHERSTREAM™**  
PROPELLERS

**flexofold**  
sailboat propellers

**MAX-PROP**  
AUTOMATIC FEATHERING PROPELLERS

NOTE: Anodes are not shown at actual size or in scale to each other. Guide measurements are approx', and should be taken where shown.

**darglow**  
MARINE ENGINEERS

Darglow Engineering Limited. Unit 6, Justin Business Park, Sandford Lane, Wareham, Dorset BH20 4DY

Tel: +44 (0)1929 556512 www.darglow.co.uk Email: mail@darglow.co.uk Fax: 01929 551 956

# ANODE

## IDENTIFICATION CHART

**darglow**

MARINE ENGINEERS

Note: Please measure points 'A' and 'B' whilst referring to this chart in order to identify your anode and then quote the 'Brand' and 'New code' ref.

Brand: Max-Prop

New code: MP03

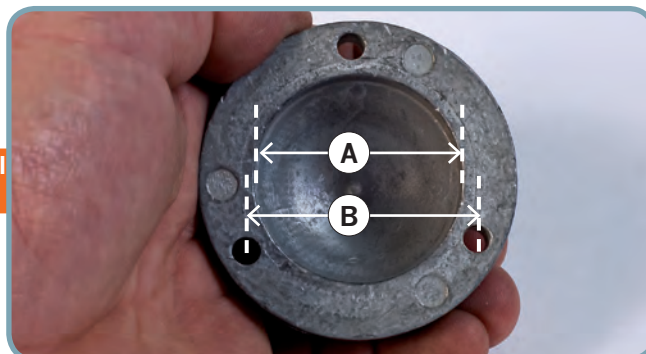
(Previous name: A63 Intermediate)

Inner cavity dia 'A' = 39mm

Hole centres 'B' = 44mm



OUTER VIEW



Brand: Max-Prop

New code: MP05

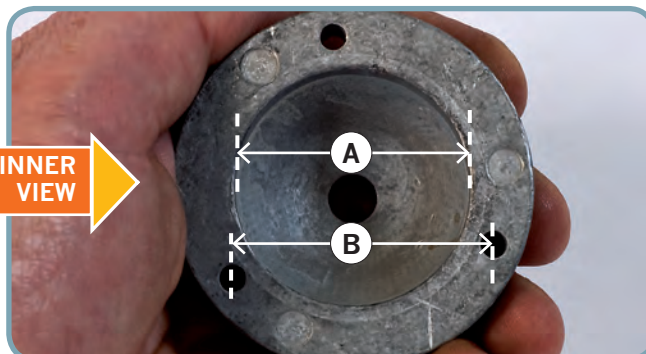
(Previous name: A63 Adapted)

Inner cavity dia 'A' = 39mm

Hole centres 'B' = 44mm



OUTER VIEW



Brand: Max-Prop

New code: MP06

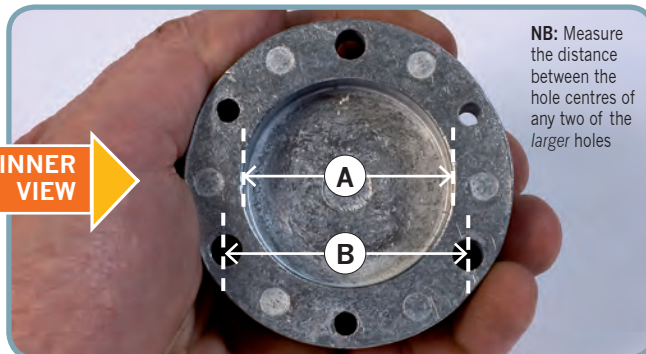
(Previous name: B70 Multi-fit)

Inner cavity dia 'A' = 43mm

Hole centres 'B' = 49mm



OUTER VIEW



NB: Measure the distance between the hole centres of any two of the larger holes

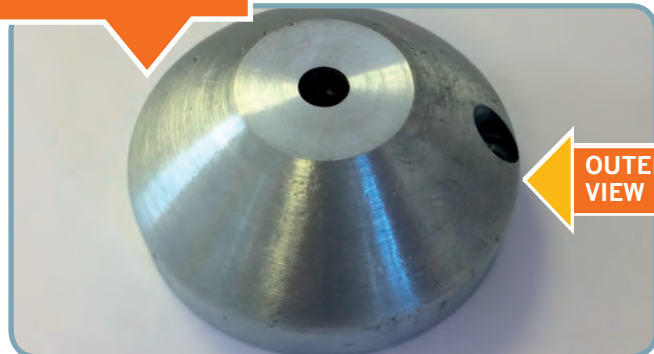
Brand: Max-Prop

New code: MP07

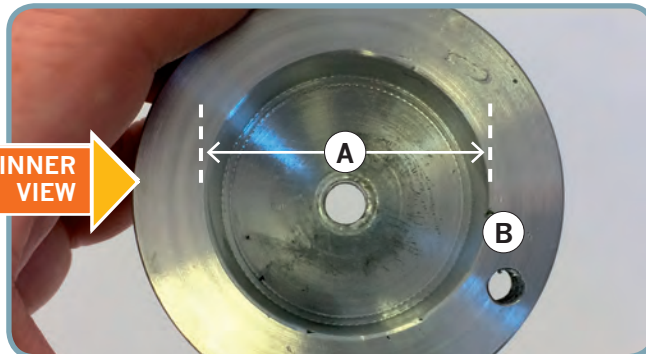
(Previous name: B70 Adapted)

Inner cavity dia 'A' = 44mm

Only ONE outer hole 'B'



OUTER VIEW



**FEATHERSTREAM™**  
PROPELLERS

**flexofold**  
sailboat propellers

**MAX-PROP**  
AUTOMATIC FEATHERING PROPELLERS

NOTE: Anodes are not shown at actual size or in scale to each other. Guide measurements are approx', and should be taken where shown.

**darglow**  
MARINE ENGINEERS

Darglow Engineering Limited. Unit 6, Justin Business Park, Sandford Lane, Wareham, Dorset BH20 4DY

Tel: +44 (0)1929 556512

www.darglow.co.uk

Email: mail@darglow.co.uk

Fax: 01929 551 956

SHEET #4



# ANODE

## IDENTIFICATION CHART

**darglow**

MARINE ENGINEERS

Note: Please measure points 'A' and 'B' whilst referring to this chart in order to identify your anode and then quote the 'Brand' and 'New code' ref.

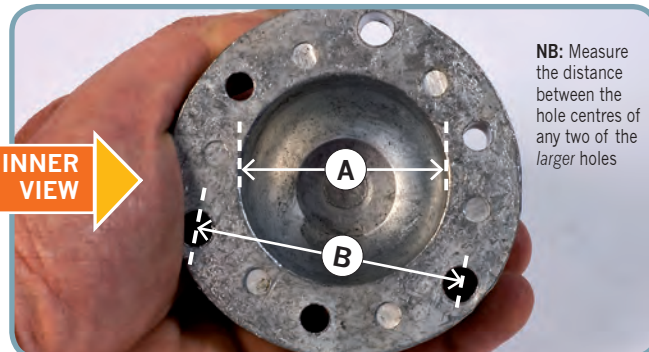
Brand: Max-Prop

New code: MP08 (Previous name: C83 Multi-fit)

Inner cavity dia 'A' = 47mm Larger hole centres 'B' = 60mm



OUTER VIEW



INNER VIEW

NB: Measure the distance between the hole centres of any two of the larger holes

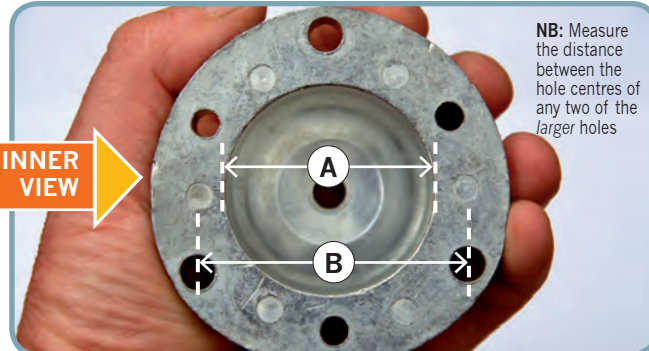
Brand: Max-Prop

New code: MP09 (Previous name: C83 Adapted)

Inner cavity dia 'A' = 47mm Larger hole centres 'B' = 60mm



OUTER VIEW



INNER VIEW

NB: Measure the distance between the hole centres of any two of the larger holes

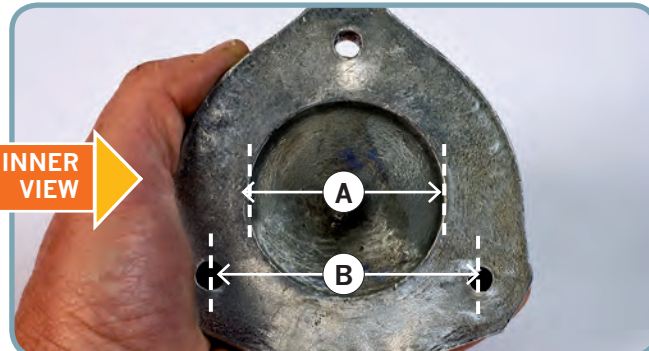
Brand: Max-Prop

New code: MP10 (Previous name: D100 Anode)

Inner cavity dia 'A' = 53mm Hole centres 'B' = 73mm



OUTER VIEW



INNER VIEW

NB: Measure the distance between the hole centres of any two of the larger holes



**FEATHERSTREAM™**  
PROPELLERS

**flexofold**  
sailboat propellers

**MAX-PROP**  
AUTOMATIC FEATHERING PROPELLERS

NOTE: Anodes are not shown at actual size or in scale to each other. Guide measurements are approx', and should be taken where shown.

**darglow**  
MARINE ENGINEERS

Darglow Engineering Limited. Unit 6, Justin Business Park, Sandford Lane, Wareham, Dorset BH20 4DY

Tel: +44 (0)1929 556512 www.darglow.co.uk Email: mail@darglow.co.uk Fax: 01929 551 956

SHEET #5



# ANODE

## IDENTIFICATION CHART

**darglow**

MARINE ENGINEERS

Note: Please measure points 'A' and 'B' whilst referring to this chart in order to identify your anode and then quote the 'Brand' and 'New code' ref.

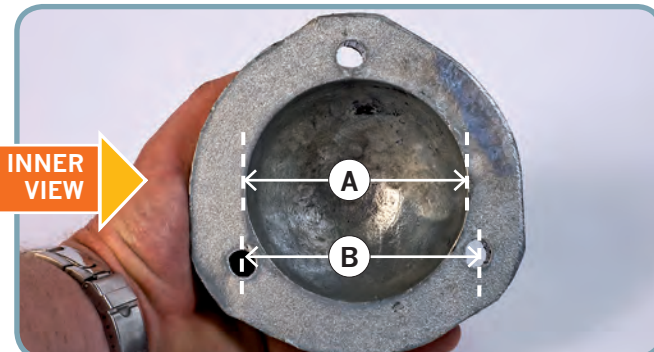
Brand: Max-Prop

New code: MP11 (Previous name: E125 Anode)

Inner cavity dia 'A' = 81mm Hole centres 'B' = 86mm



OUTER  
VIEW



INNER  
VIEW

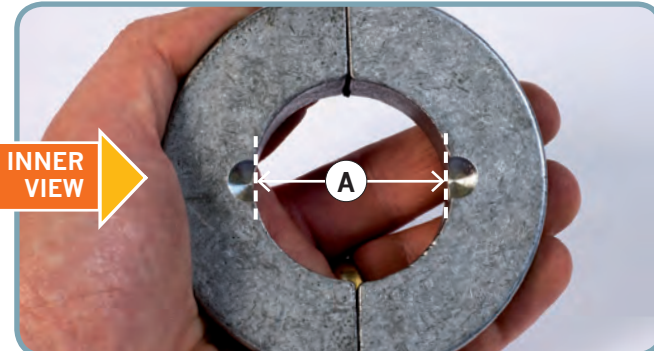
Brand: Max-Prop

New code: MP12 (Previous name: Sail drive Rope Cutter)

Inner dia 'A' = 45mm (no 'B' dimension required)



OUTER  
VIEW



INNER  
VIEW

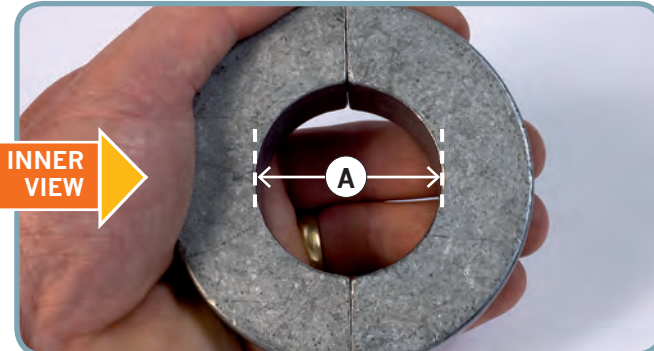
Brand: Max-Prop

New code: MP13 (Previous name: Sail drive NOT Rope Cutter)

Inner dia 'A' = 45mm (no 'B' dimension required)



OUTER  
VIEW



INNER  
VIEW

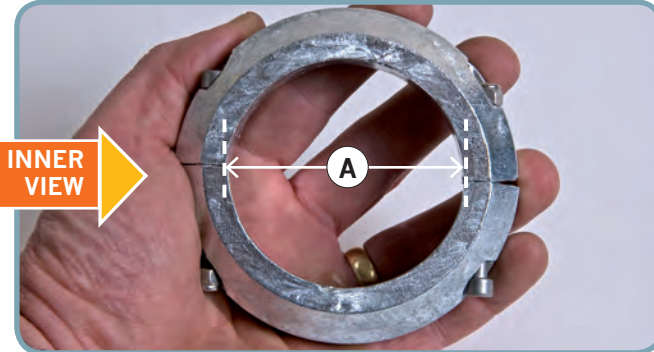
Brand: Max-Prop

New code: MP14 (Previous name: Sail Drive E70)

Inner dia 'A' = 61mm (no 'B' dimension required)



OUTER  
VIEW



INNER  
VIEW

SHEET #6

**FEATHERSTREAM™**  
PROPELLERS

**flexofold**  
sailboat propellers

**MAX-PROP**  
AUTOMATIC FEATHERING PROPELLERS

NOTE: Anodes are not shown at actual size or in scale to each other. Guide measurements are approx', and should be taken where shown.

**darglow**  
MARINE ENGINEERS

Darglow Engineering Limited. Unit 6, Justin Business Park, Sandford Lane, Wareham, Dorset BH20 4DY

Tel: +44 (0)1929 556512 www.darglow.co.uk Email: mail@darglow.co.uk Fax: 01929 551 956